

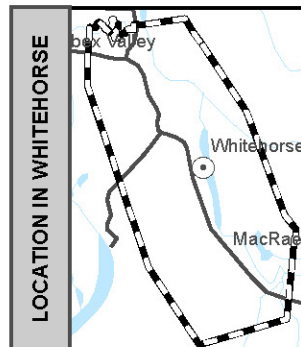
Electoral District

**Whitehorse
West**

ED19

Map 1 of 1

Circonscription électorale



POLLING DIVISIONS - 4/4

PD 1
PD 2
PD 3
PD 4



2703 2nd Ave
PO Box 2710 (A-9)
Whitehorse, Yukon Y1A 2C6

electionsyukon.ca
info@electionsyukon.ca
1 (866) 668-8683 (toll free)

Published by the Chief Electoral
Officer of Yukon

Revised: Feb 2021



Takhini-Kopper King

Mountainview

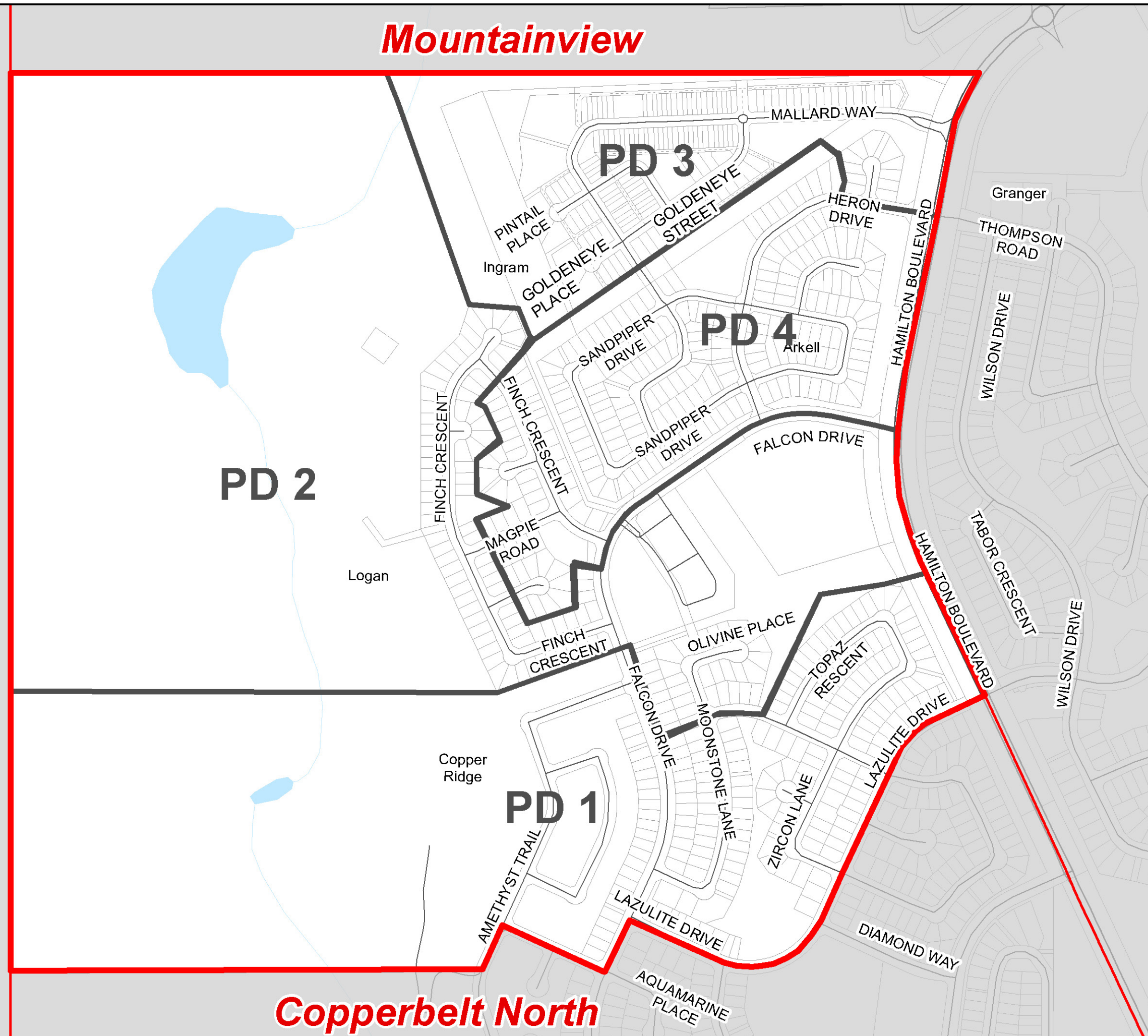
PD 2

PD 3

PD 4

PD 1

Copperbelt North

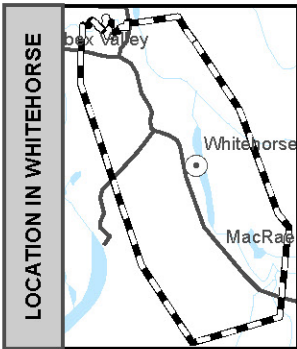


Electoral District

Whitehorse
West
ED19

Map 1 of 1

Circonscription électorale



POLLING DIVISIONS - 4/4

- PD 1
- PD 2
- PD 3
- PD 4



2703 2nd Ave
PO Box 2710 (A-9)
Whitehorse, Yukon Y1A 2C6

electionsyukon.ca
info@electionsyukon.ca
1 (866) 668-8683 (toll free)

Published by the Chief Electoral
Officer of Yukon

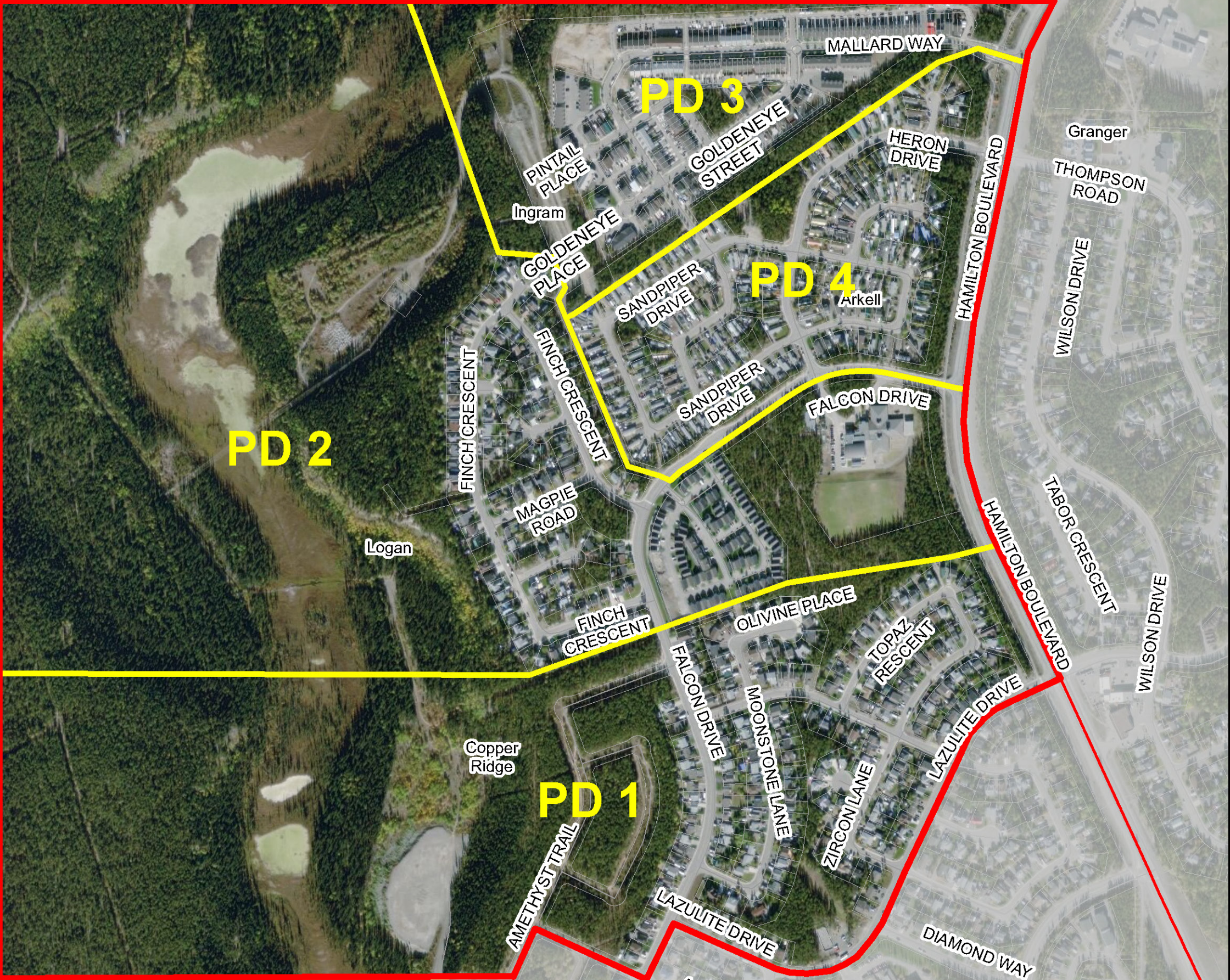
Revised: Nov 2020



Takhini-Kopper King

Mountainview

Copperbelt North



Source: Esri, Maxar, GeoEye, Earthstar Geographics, CNES/Airbus DS, USDA, USGS, AeroGRID, IGN, and the GIS User Community