

**POLLING DIVISIONS - 6/6**

- PD 1
- PD 2
- PD 3
- PD 4
- PD 5
- PD 6

Electoral District

Whitehorse  
Centre

ED18

Map 1 of 2

Circonscription électorale



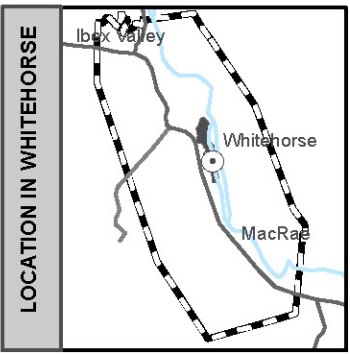
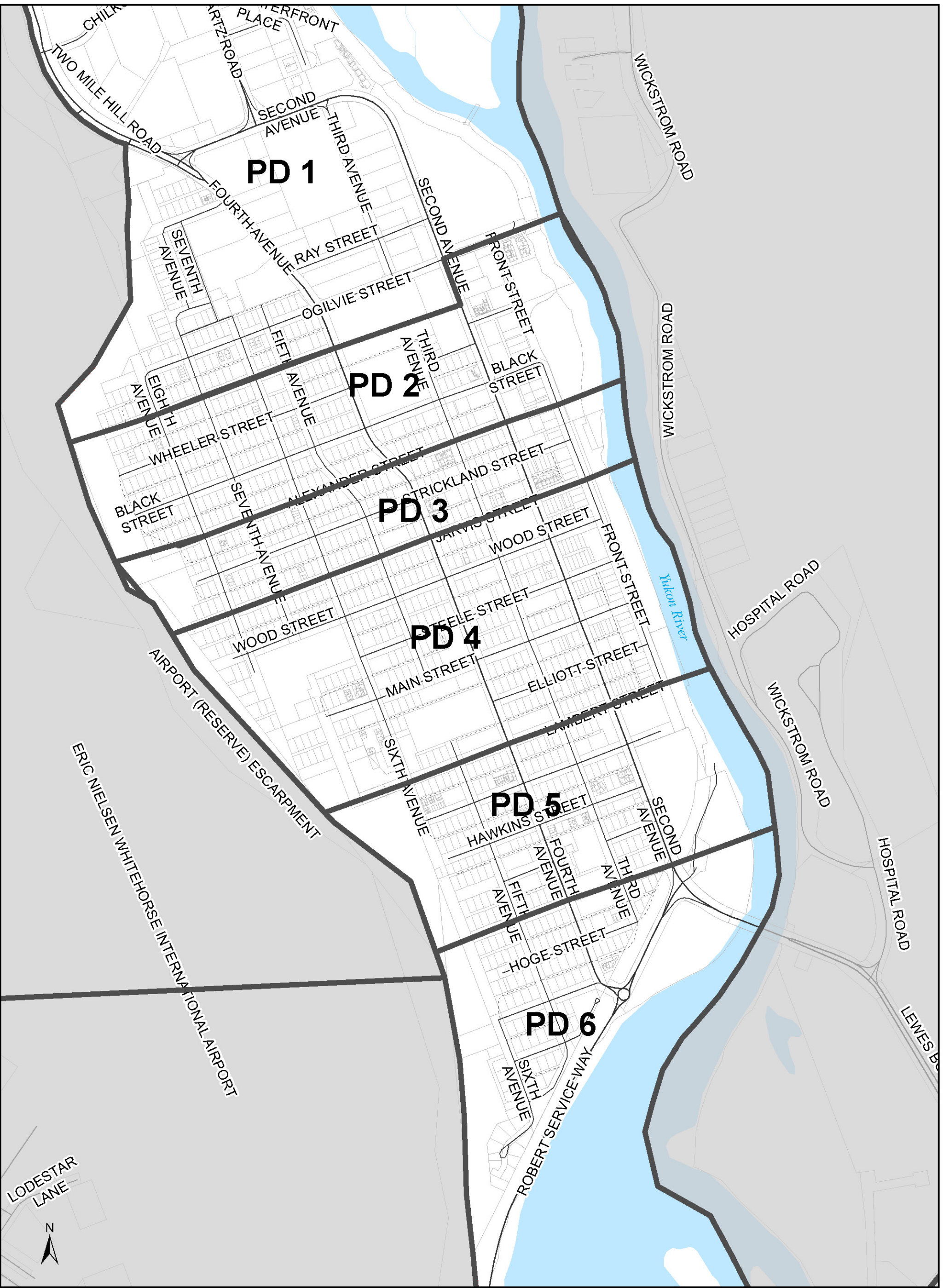
2703 2nd Ave  
PO Box 2710 (A-9)  
Whitehorse, Yukon Y1A 2C6

electionsyukon.ca  
info@electionsyukon.ca  
1 (866) 668-8683 (toll free)

Published by the Chief Electoral  
Officer of Yukon

Revised: Feb 2021





**POLLING DIVISIONS - 5/5**

- PD 1
- PD 2
- PD 3
- PD 4

**Electoral District**

Whitehorse  
Centre

ED18

Map 2 of 2

Circonscription électorale



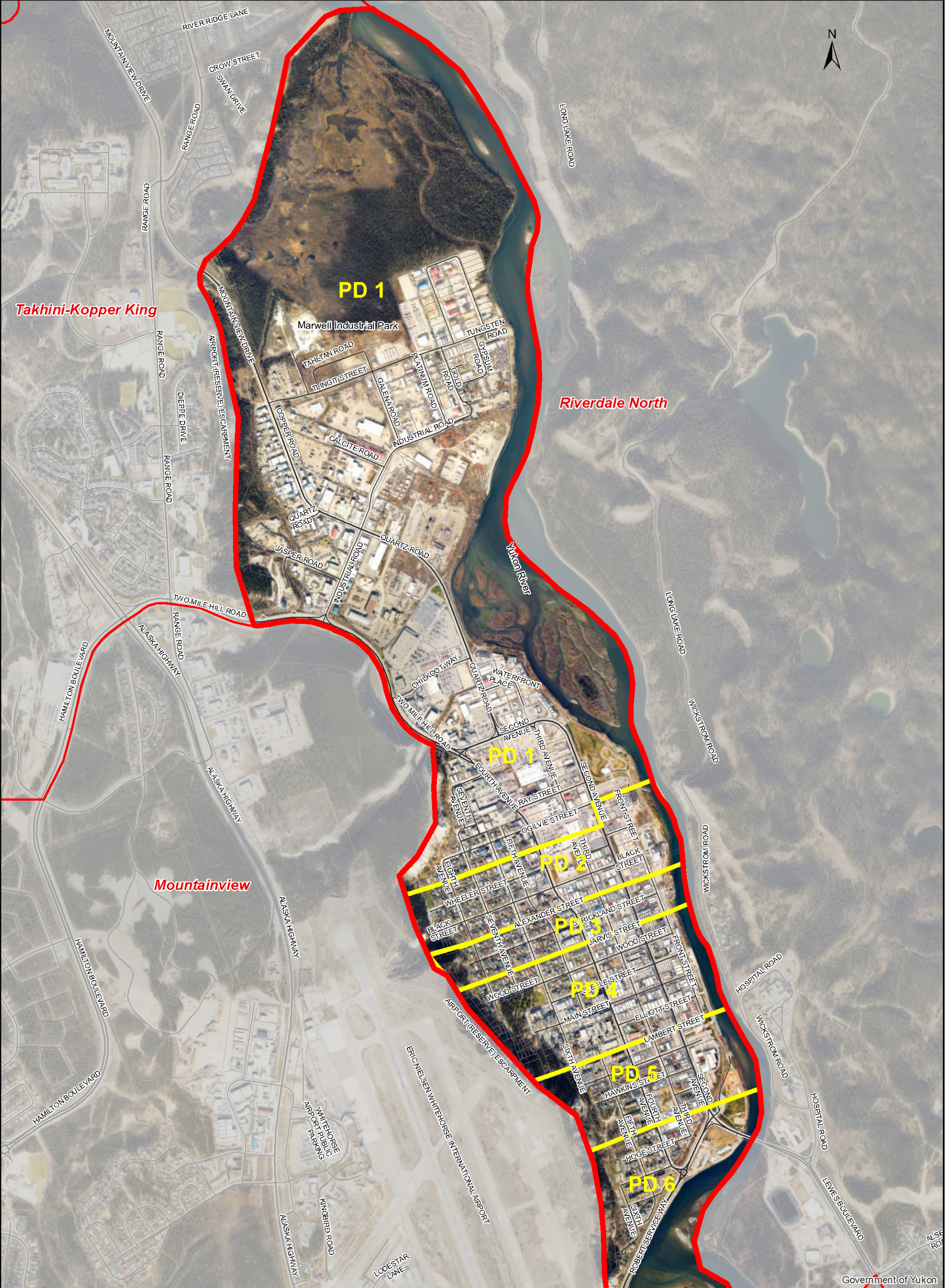
2703 2nd Ave  
PO Box 2710 (A-9)  
Whitehorse, Yukon Y1A 2C6

electionsyukon.ca  
info@electionsyukon.ca  
1 (866) 668-8683 (toll free)

Published by the Chief Electoral  
Officer of Yukon

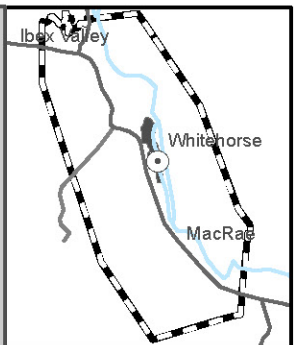
Revised: Feb 2021





Government of Yukon

LOCATION IN WHITEHORSE



- POLLING DIVISIONS - 6/6**
- PD 1
  - PD 2
  - PD 3
  - PD 4
  - PD 5
  - PD 6

**Electoral District**

Whitehorse  
Centre  
ED18  
Map 1 of 2

Circonscription électorale



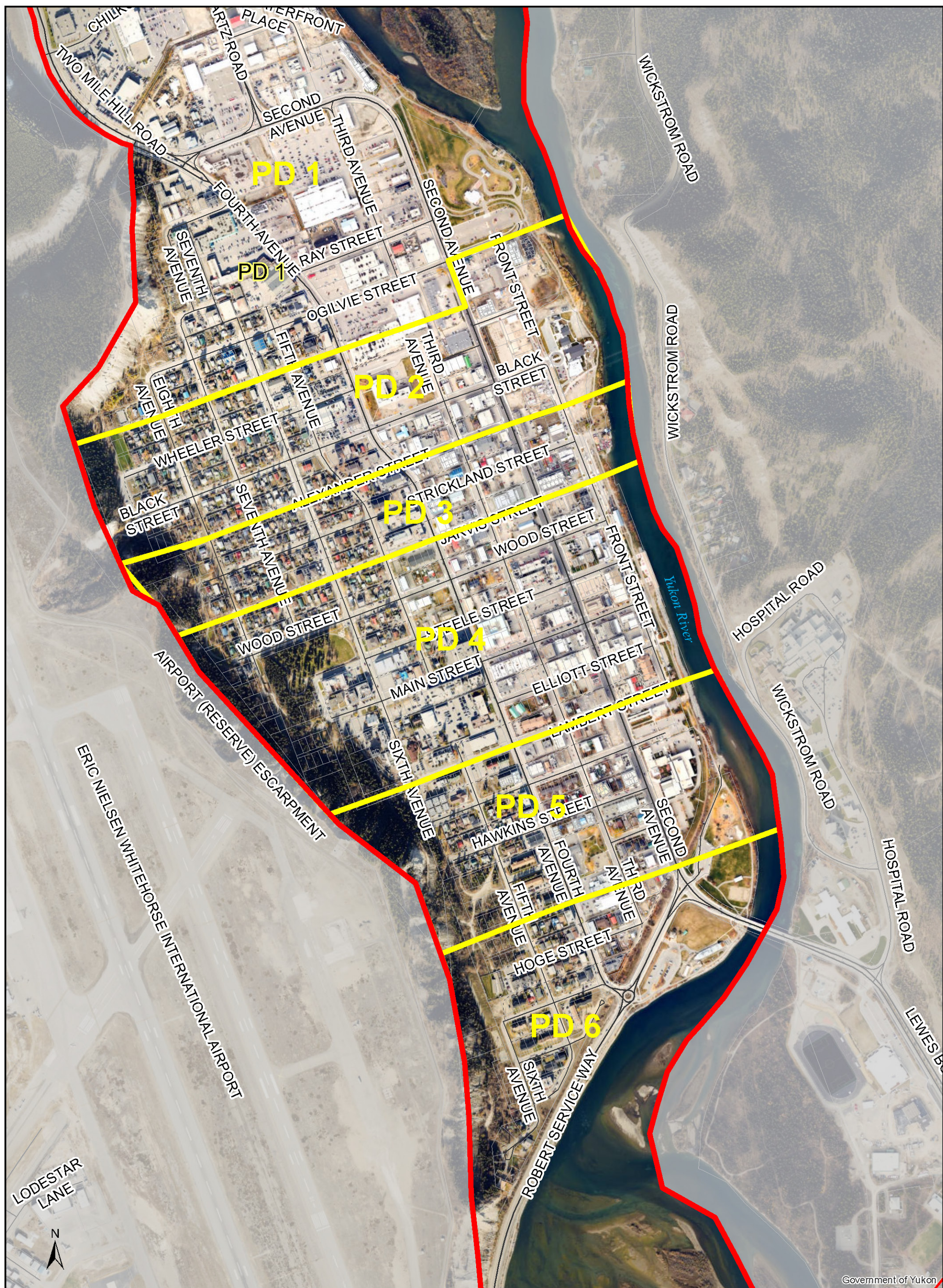
2703 2nd Ave  
PO Box 2710 (A-9)  
Whitehorse, Yukon Y1A 2C6

[electionsyukon.ca](http://electionsyukon.ca)  
[info@electionsyukon.ca](mailto:info@electionsyukon.ca)  
1 (866) 668-8683 (toll free)

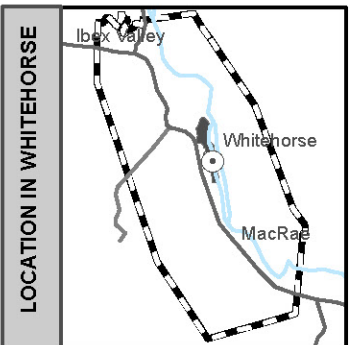
Published by the Chief Electoral  
Officer of Yukon

Revised: Feb 2021





Government of Yukon



**POLLING DIVISIONS - 6/6**

- PD 1
- PD 2
- PD 3
- PD 4
- PD 5
- PD 6

**Electoral District**

**Whitehorse**  
**Centre**

**ED18**

**Map 2 of 2**

Circonscription électorale



2703 2nd Ave  
PO Box 2710 (A-9)  
Whitehorse, Yukon Y1A 2C6

[electionsyukon.ca](http://electionsyukon.ca)  
[info@electionsyukon.ca](mailto:info@electionsyukon.ca)  
1 (866) 668-8683 (toll free)

Published by the Chief Electoral  
Officer of Yukon

Revised: Feb 2021