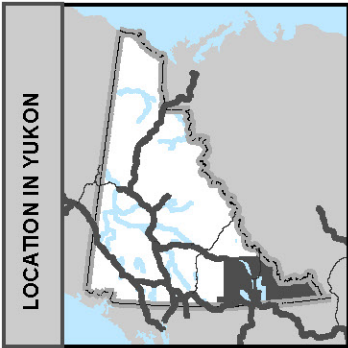


Electoral District

Watson Lake
ED17
Map 1 of 2

Circonscription électorale



POLLING DIVISIONS - 3/3

- PD 1
- PD 2
- PD 3

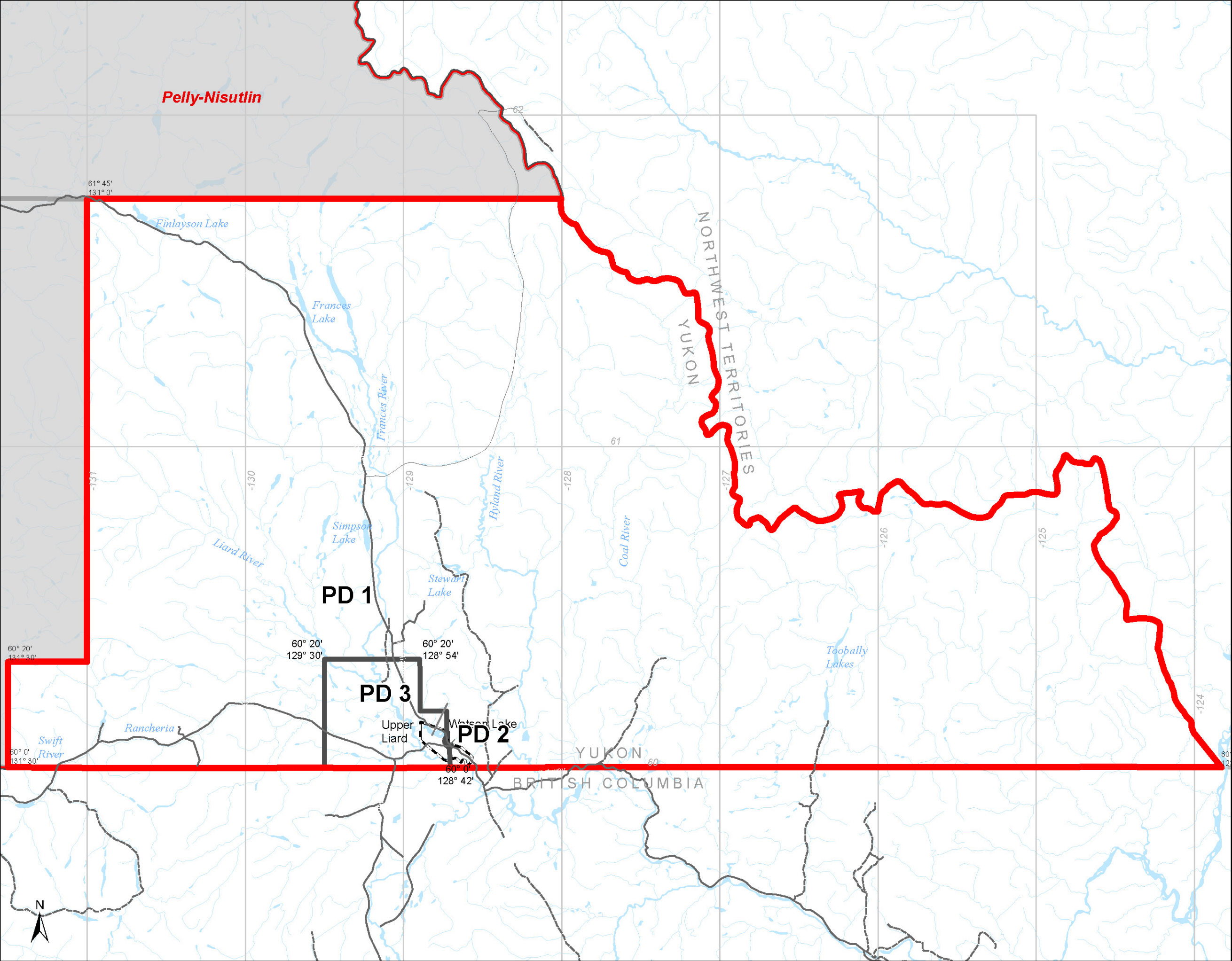


2703 2nd Ave
PO Box 2710 (A-9)
Whitehorse, Yukon Y1A 2C6

electionsyukon.ca
info@electionsyukon.ca
1 (866) 668-8683 (toll free)

Published by the Chief Electoral
Officer of Yukon

Revised: Feb 2021



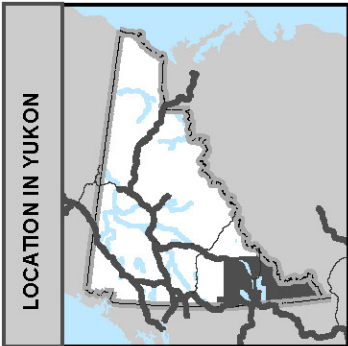
Electoral District

Watson Lake

ED17

Map 2 of 2

Circonscription électorale



POLLING DIVISIONS - 3/3

- PD 1
- PD 2
- PD 3

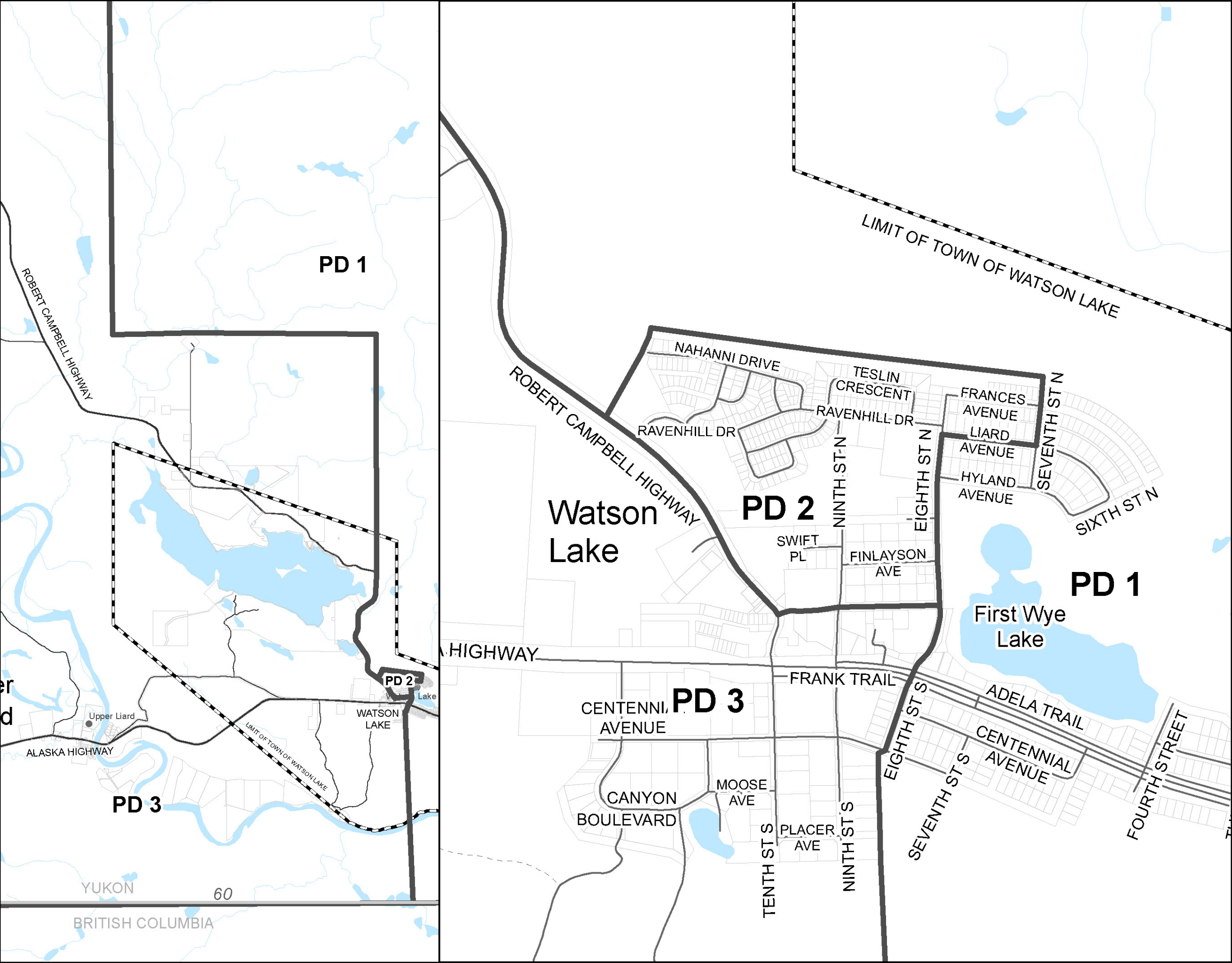


2703 2nd Ave
PO Box 2710 (A-9)
Whitehorse, Yukon Y1A 2C6

electionsyukon.ca
info@electionsyukon.ca
1 (866) 668-8683 (toll free)

Published by the Chief Electoral
Officer of Yukon

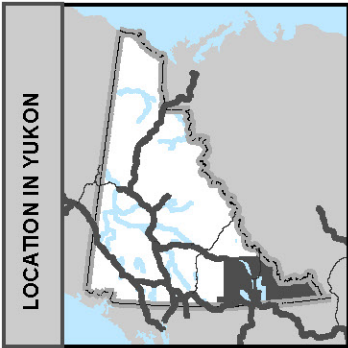
Revised: Feb 2021



Electoral District

Watson Lake
ED17
Map 1 of 2

Circonscription électorale



POLLING DIVISIONS - 3/3

- PD 1
- PD 2
- PD 3

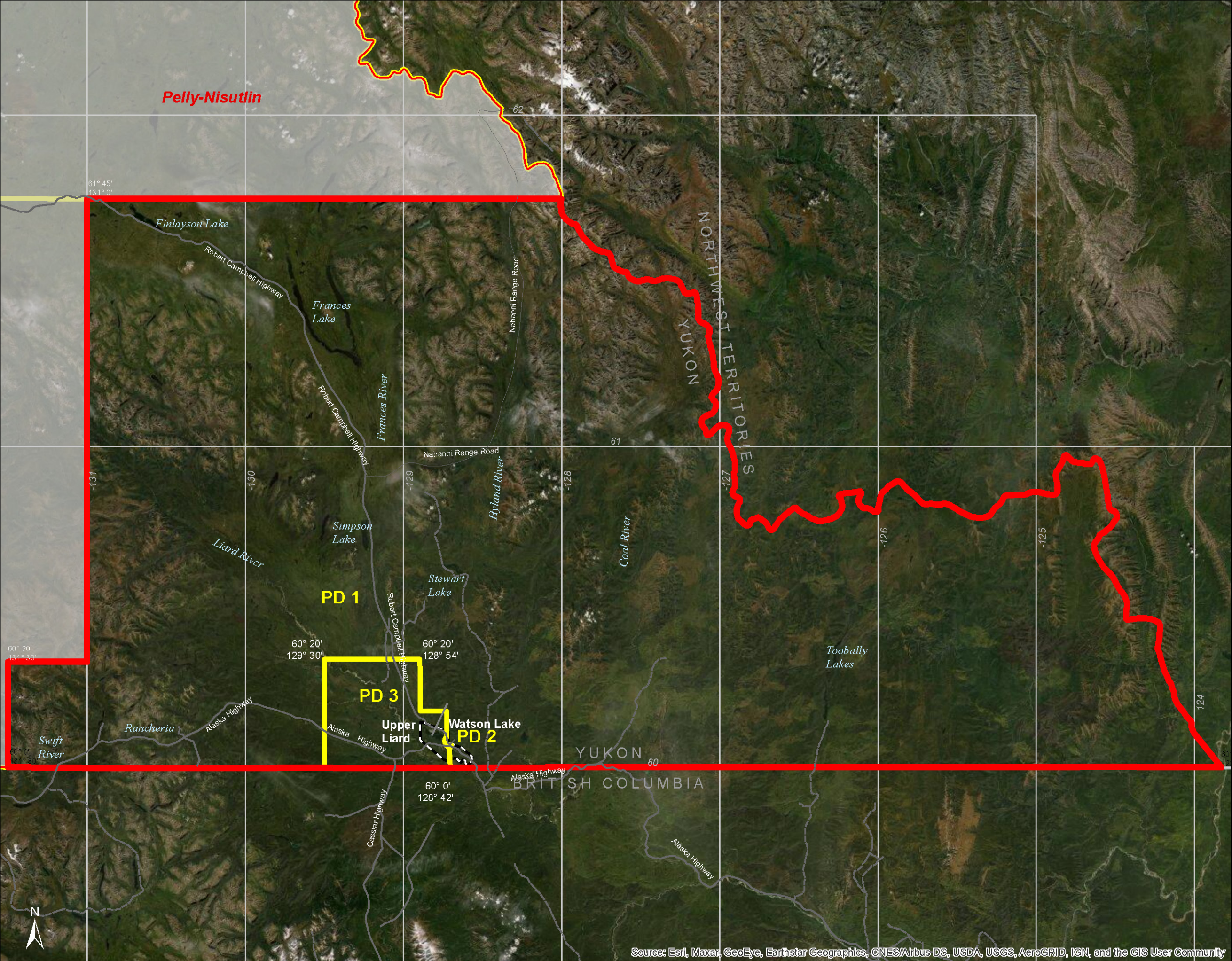


2703 2nd Ave
PO Box 2710 (A-9)
Whitehorse, Yukon Y1A 2C6

electionsyukon.ca
info@electionsyukon.ca
1 (866) 668-8683 (toll free)

Published by the Chief Electoral
Officer of Yukon

Revised: Feb 2021



Source: Esri, Maxar, GeoEye, Earthstar Geographics, CNES/Airbus DS, USDA, USGS, AeroGRID, IGN, and the GIS User Community

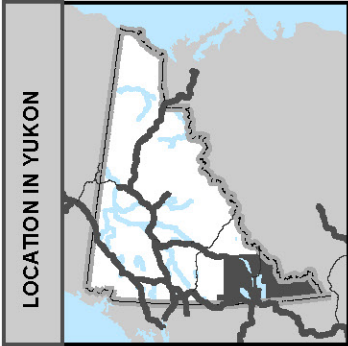
Electoral District

Watson Lake

ED17

Map 2 of 2

Circonscription électorale



POLLING DIVISIONS - 3/3

- PD 1
- PD 2
- PD 3

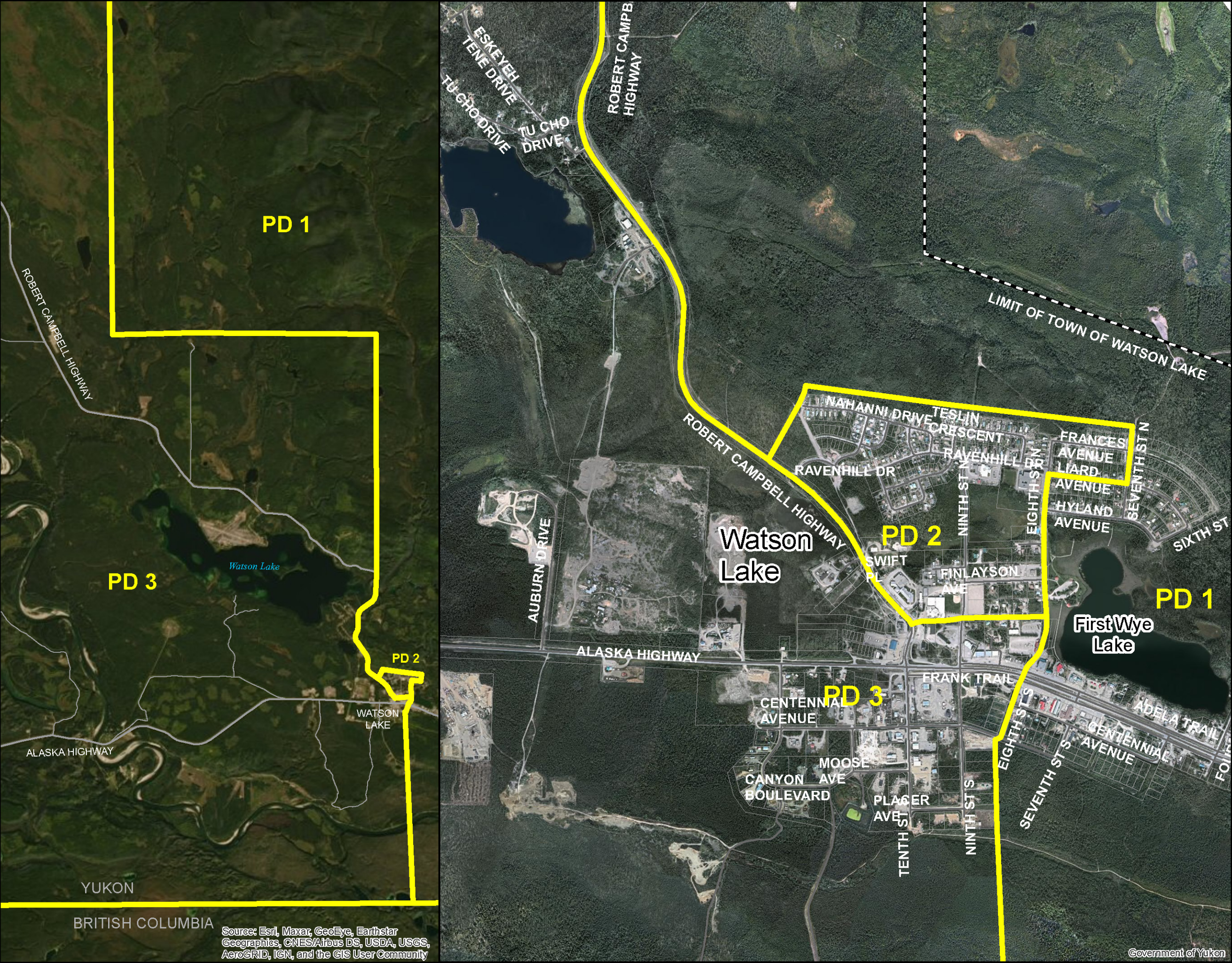


2703 2nd Ave
PO Box 2710 (A-9)
Whitehorse, Yukon Y1A 2C6

electionsyukon.ca
info@electionsyukon.ca
1 (866) 668-8683 (toll free)

Published by the Chief Electoral
Officer of Yukon

Revised: Feb 2021



Source: Esri, Maxar, GeoEye, Earthstar
Geographics, CNES/Airbus DS, USDA, USGS,
AeroGRID, IGN, and the GIS User Community