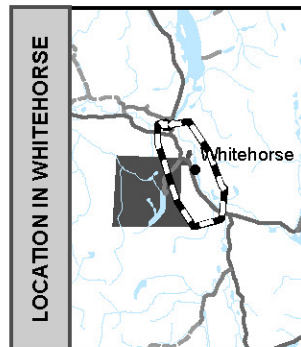


## Electoral District

### Takhini - Kopper King ED15

Map 1 of 2

## Circonscription électorale



## POLLING DIVISIONS - 6/6

PD 1  
PD 2  
PD 3  
PD 4  
PD 5  
PD 6

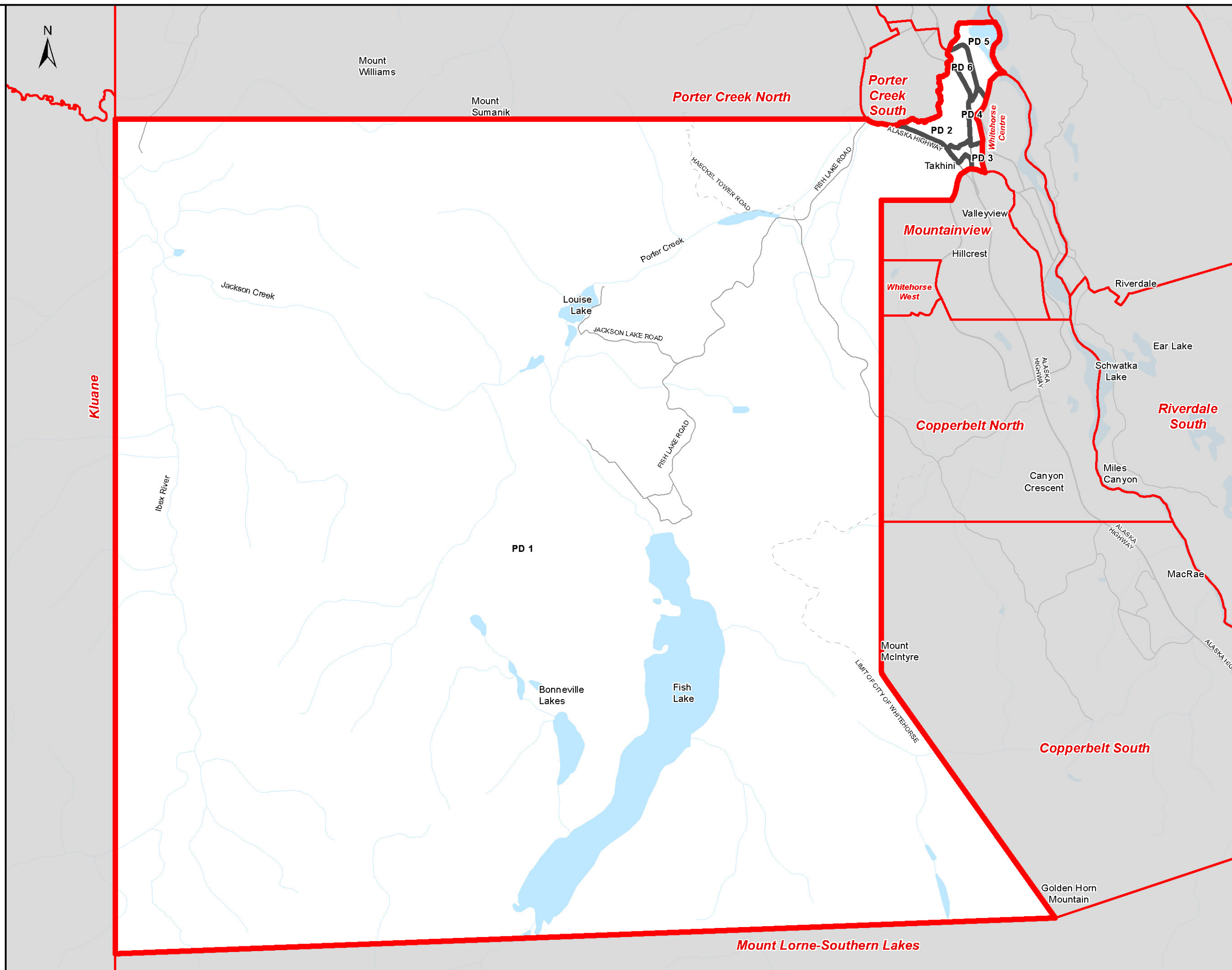


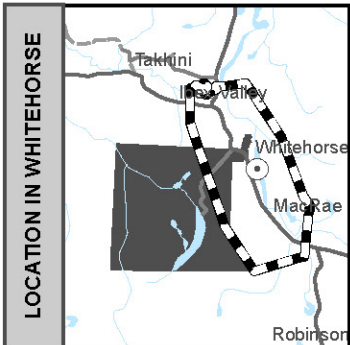
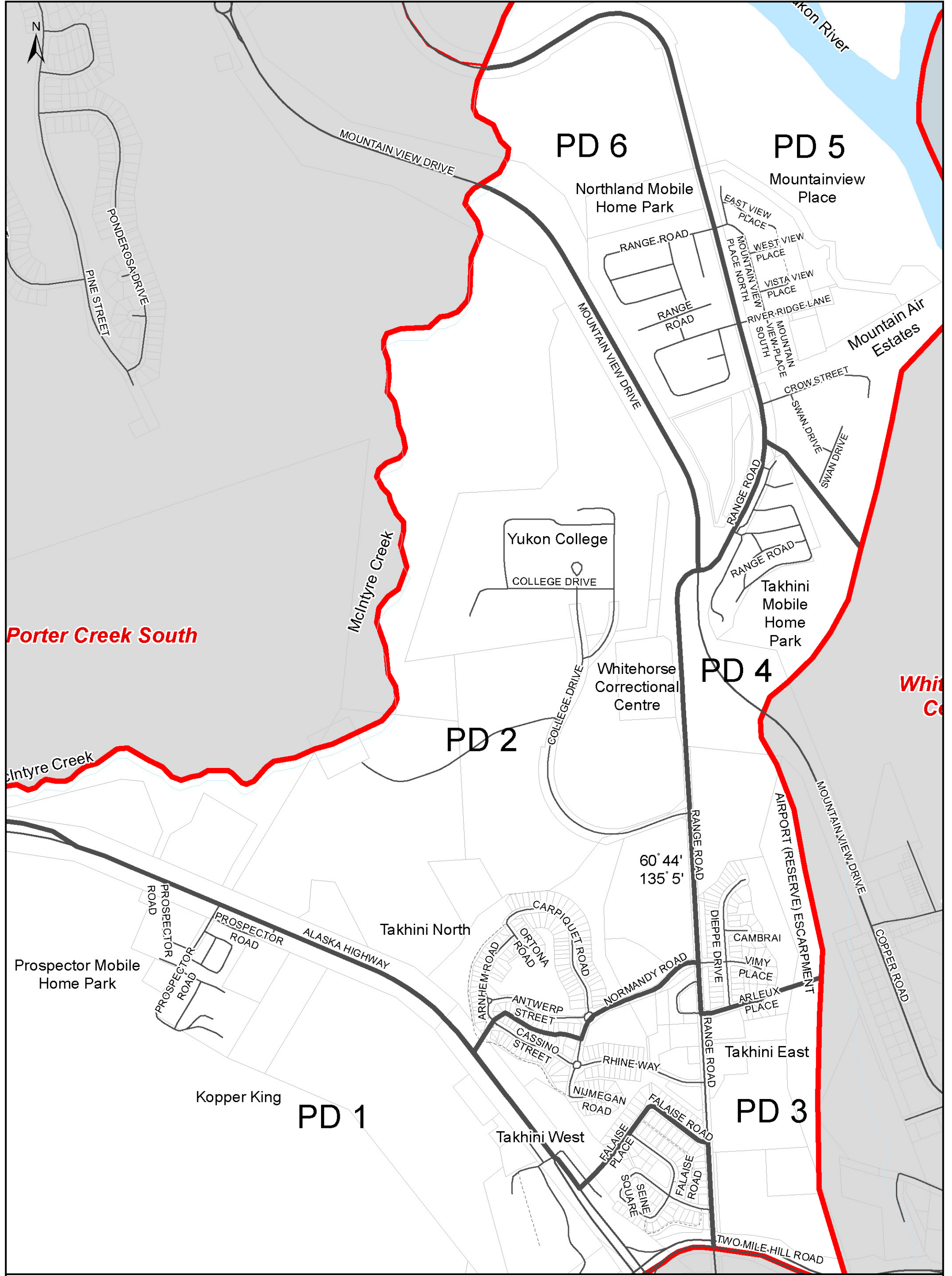
2703 2nd Ave  
PO Box 2710 (A-9)  
Whitehorse, Yukon Y1A 2C6

electionsyukon.ca  
info@electionsyukon.ca  
1 (866) 668-8683 (toll free)

Published by the Chief Electoral  
Officer of Yukon

Revised: Feb 2021





POLLING DIVISIONS - 6/6

- PD 1
- PD 2
- PD 3
- PD 4
- PD 5
- PD 6

Electoral District

Takhini - Kopper King

ED15

Map 2 of 2

Circonscription électorale



2703 2nd Ave  
PO Box 2710 (A-9)  
Whitehorse, Yukon Y1A 2C6

electionsyukon.ca  
info@electionsyukon.ca  
1 (866) 668-8683 (toll free)

Published by the Chief Electoral Officer of Yukon

Revised: Feb 2021

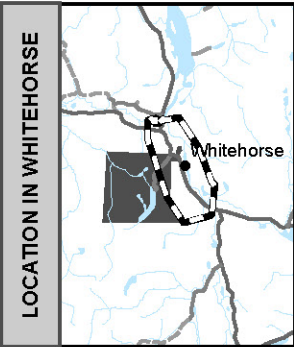


Electoral District

Takhini -  
Kopper King  
ED15

Map 1 of 2

Circonscription électorale



POLLING DIVISIONS - 6/6

- PD 1
- PD 2
- PD 3
- PD 4
- PD 5
- PD 6

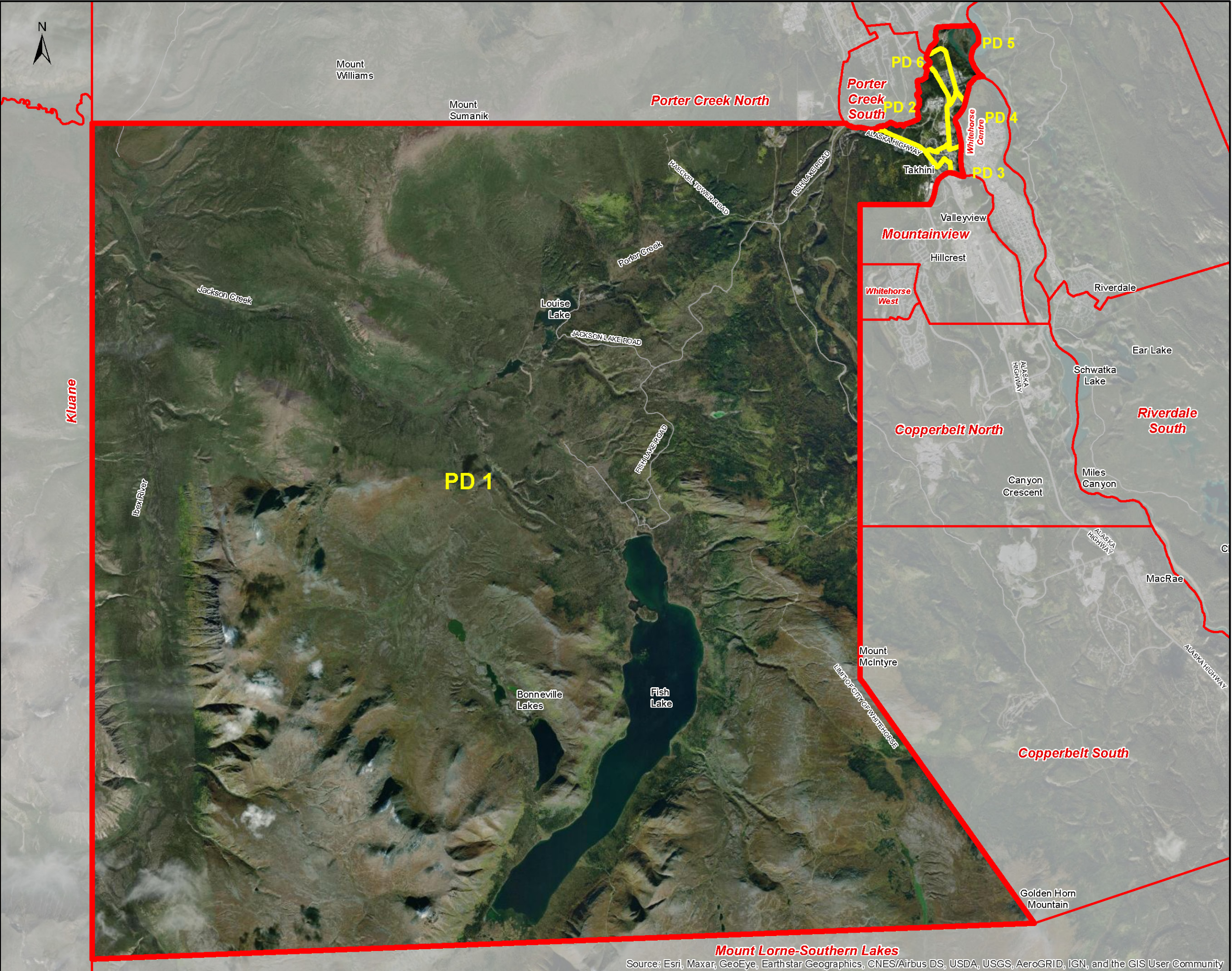


2703 2nd Ave  
PO Box 2710 (A-9)  
Whitehorse, Yukon Y1A 2C6

electionsyukon.ca  
info@electionsyukon.ca  
1 (866) 668-8683 (toll free)

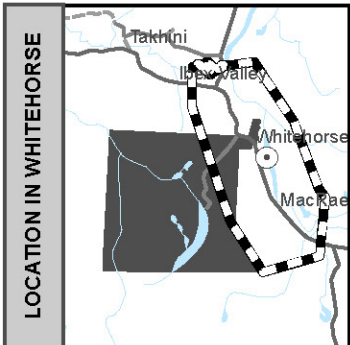
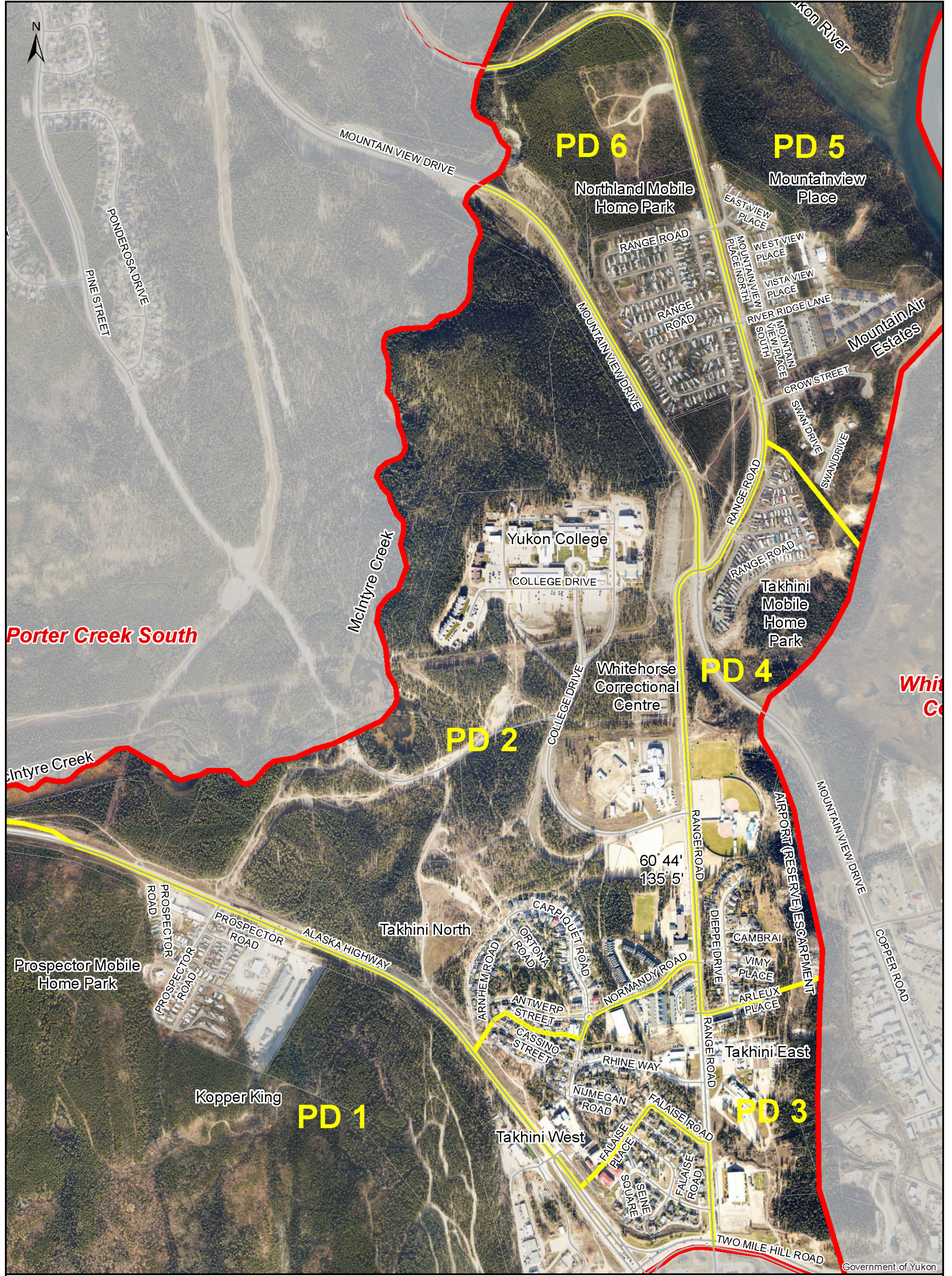
Published by the Chief Electoral  
Officer of Yukon

Revised: Feb 2021



Source: Esri, Maxar, GeoEye, Earthstar Geographics, CNES/Airbus DS, USDA, USGS, AeroGRID, IGN, and the GIS User Community





- POLLING DIVISIONS - 6/6**
- PD 1
  - PD 2
  - PD 3
  - PD 4
  - PD 5
  - PD 6

**Electoral District**

**Takhini - Kopper King**

**ED15**

**Map 2 of 2**

**Circonscription électorale**



2703 2nd Ave  
PO Box 2710 (A-9)  
Whitehorse, Yukon Y1A 2C6

electionsyukon.ca  
info@electionsyukon.ca  
1 (866) 668-8683 (toll free)

Published by the Chief Electoral  
Officer of Yukon

Revised: Feb 2021