

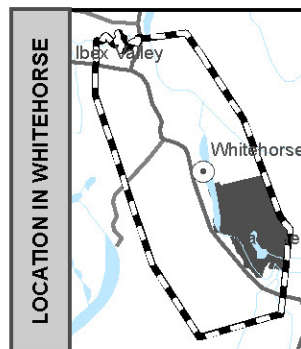
Electoral District

**Riverdale
South**

ED14

Map 1 of 2

Circonscription électorale



POLLING DIVISIONS - 5/5

PD 1
PD 2
PD 3
PD 4
PD 5

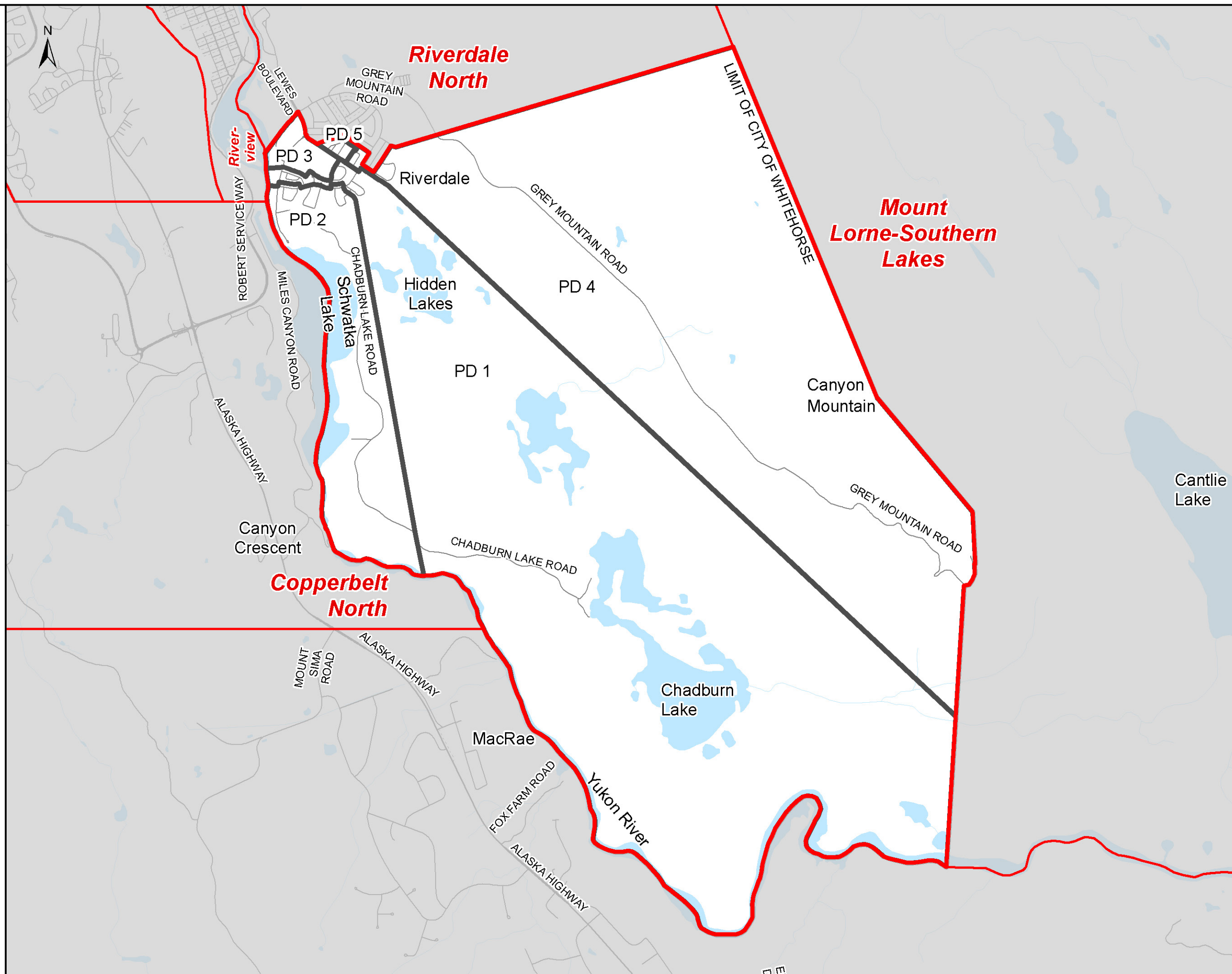


2703 2nd Ave
PO Box 2710 (A-9)
Whitehorse, Yukon Y1A 2C6

electionsyukon.ca
info@electionsyukon.ca
1 (866) 668-8683 (toll free)

Published by the Chief Electoral
Officer of Yukon

Revised: Feb 2021

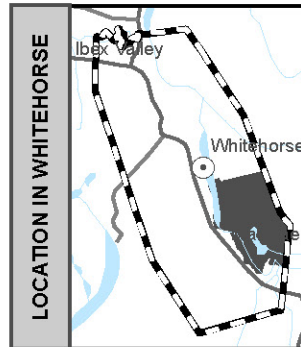


Electoral District

**Riverdale
South
ED14**

Map 2 of 2

Circonscription électorale



POLLING DIVISIONS - 5/5

- PD 1
- PD 2
- PD 3
- PD 4
- PD 5

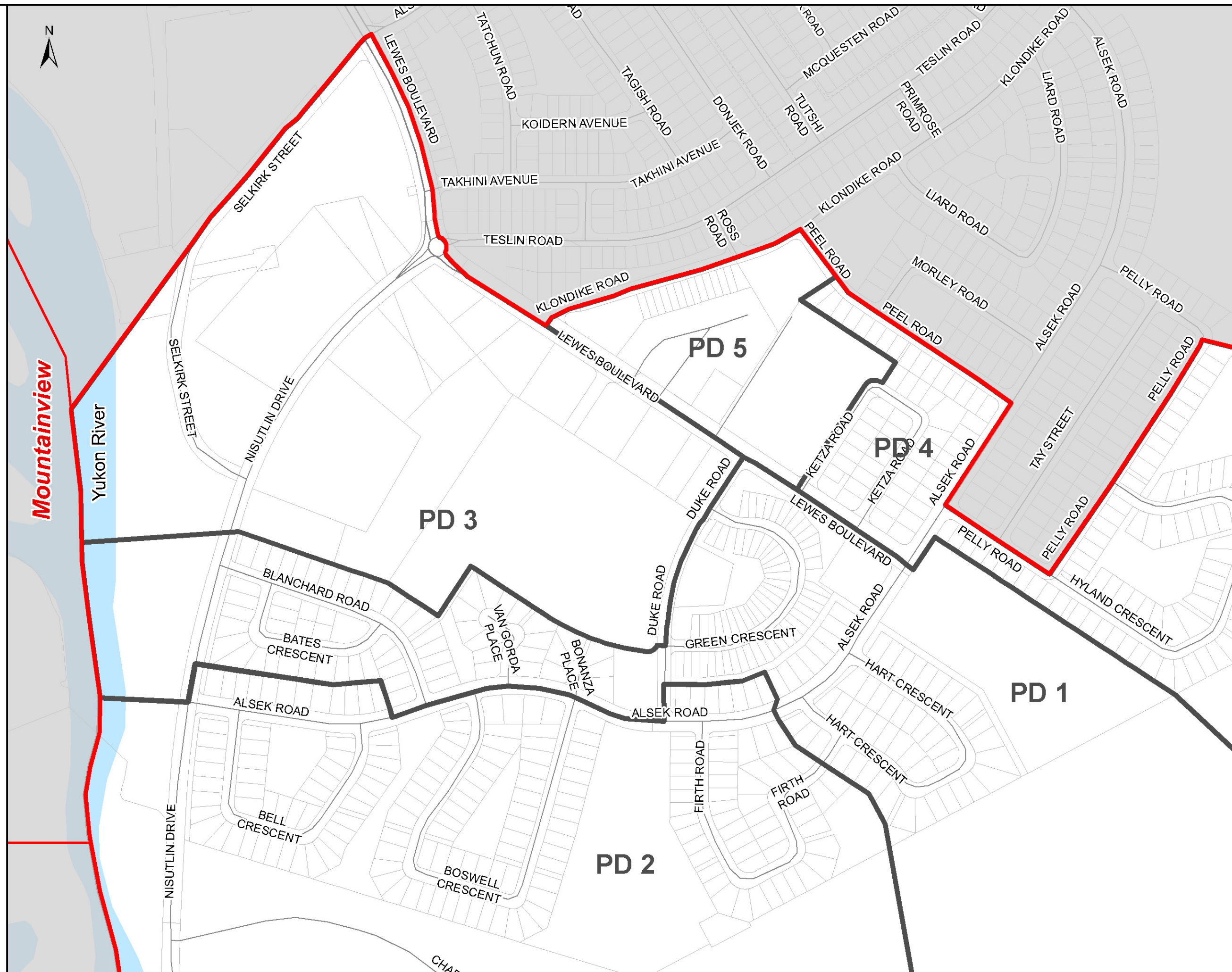


2703 2nd Ave
PO Box 2710 (A-9)
Whitehorse, Yukon Y1A 2C6

electionsyukon.ca
info@electionsyukon.ca
1 (866) 668-8683 (toll free)

Published by the Chief Electoral
Officer of Yukon

Revised: Feb 2021



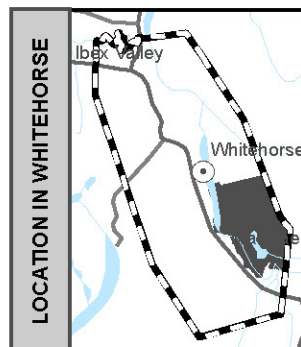
Electoral District

**Riverdale
South**

ED14

Map 1 of 2

Circonscription électorale



POLLING DIVISIONS - 5/5

- PD 1
- PD 2
- PD 3
- PD 4
- PD 5

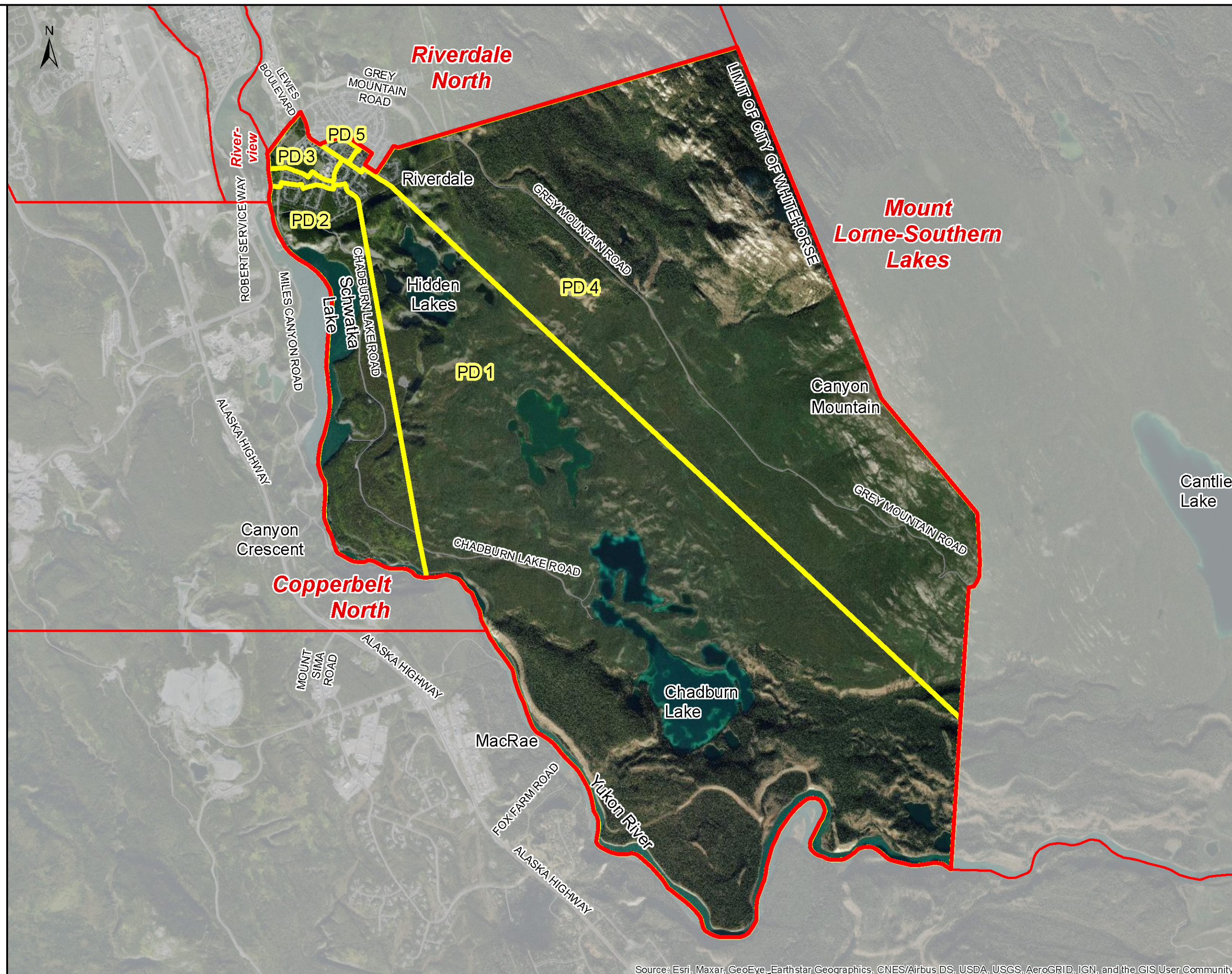


2703 2nd Ave
PO Box 2710 (A-9)
Whitehorse, Yukon Y1A 2C6

electionsyukon.ca
info@electionsyukon.ca
1 (866) 668-8683 (toll free)

Published by the Chief Electoral
Officer of Yukon

Revised: Feb 2021

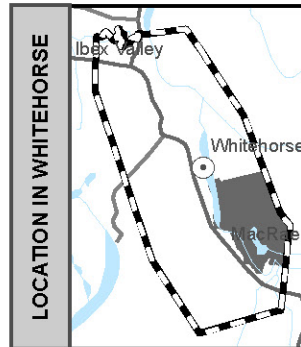


Electoral District

**Riverdale
South
ED14**

Map 2 of 2

Circonscription électorale



POLLING DIVISIONS - 5/5

PD 1
PD 2
PD 3
PD 4
PD 5



2703 2nd Ave
PO Box 2710 (A-9)
Whitehorse, Yukon Y1A 2C6

electionsyukon.ca
info@electionsyukon.ca
1 (866) 668-8683 (toll free)

Published by the Chief Electoral
Officer of Yukon

Revised: Feb 2021

