

POLLING DIVISIONS - 4/4

- PD 1
- PD 2
- PD 3
- PD 4

Electoral District

Riverdale North

ED13

Map 1 of 2

Circonscription électorale



2703 2nd Ave
PO Box 2710 (A-9)
Whitehorse, Yukon Y1A 2C6

electionsyukon.ca
info@electionsyukon.ca
1 (866) 668-8683 (toll free)

Published by the Chief Electoral
Officer of Yukon

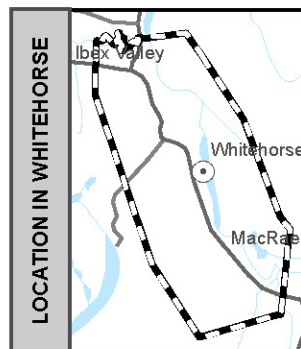
Revised: Feb 2021

Electoral District

**Riverdale
North
ED13**

Map 2 of 2

Circonscription électorale



POLLING DIVISIONS - 4/4

- PD 1
- PD 2
- PD 3
- PD 4

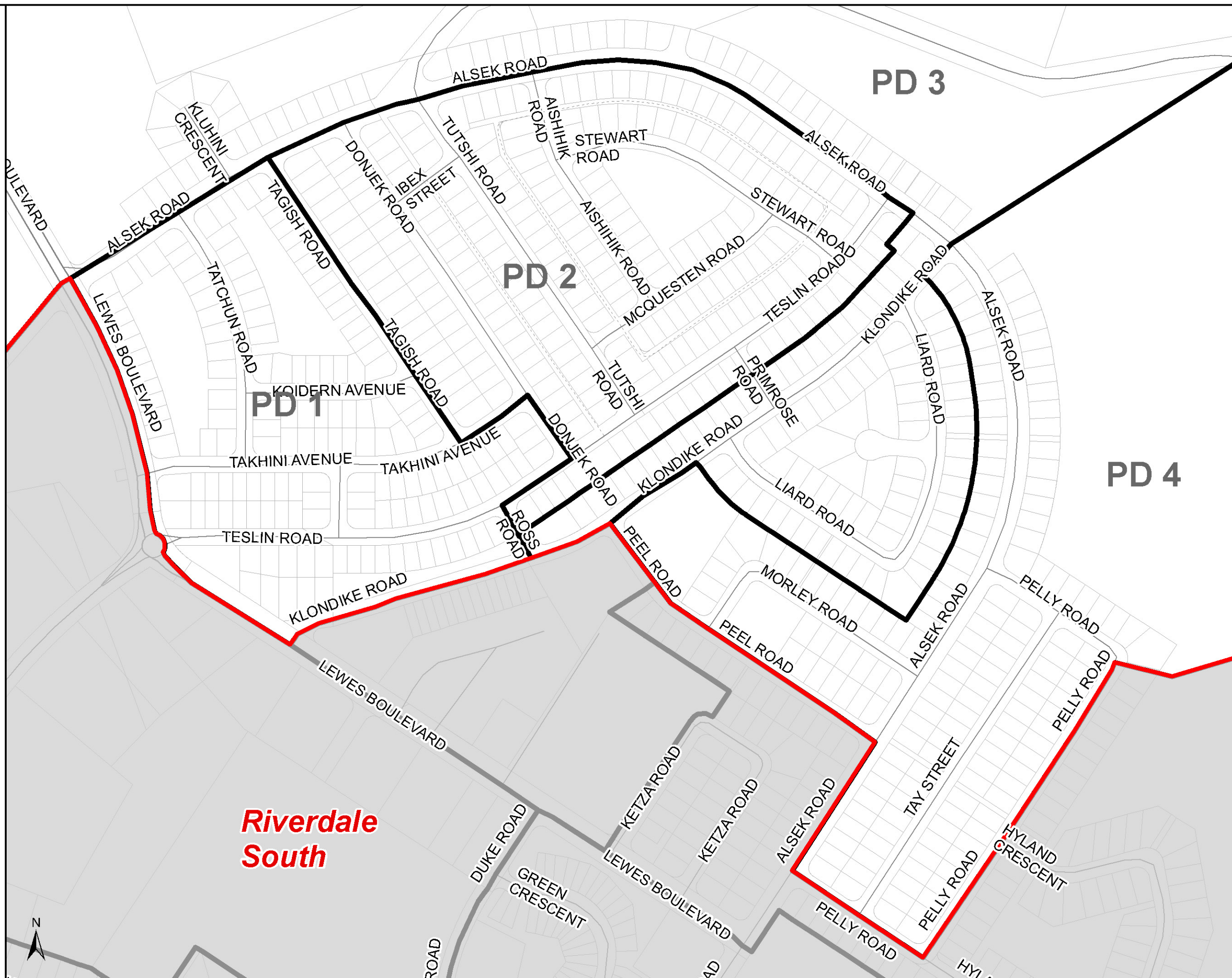


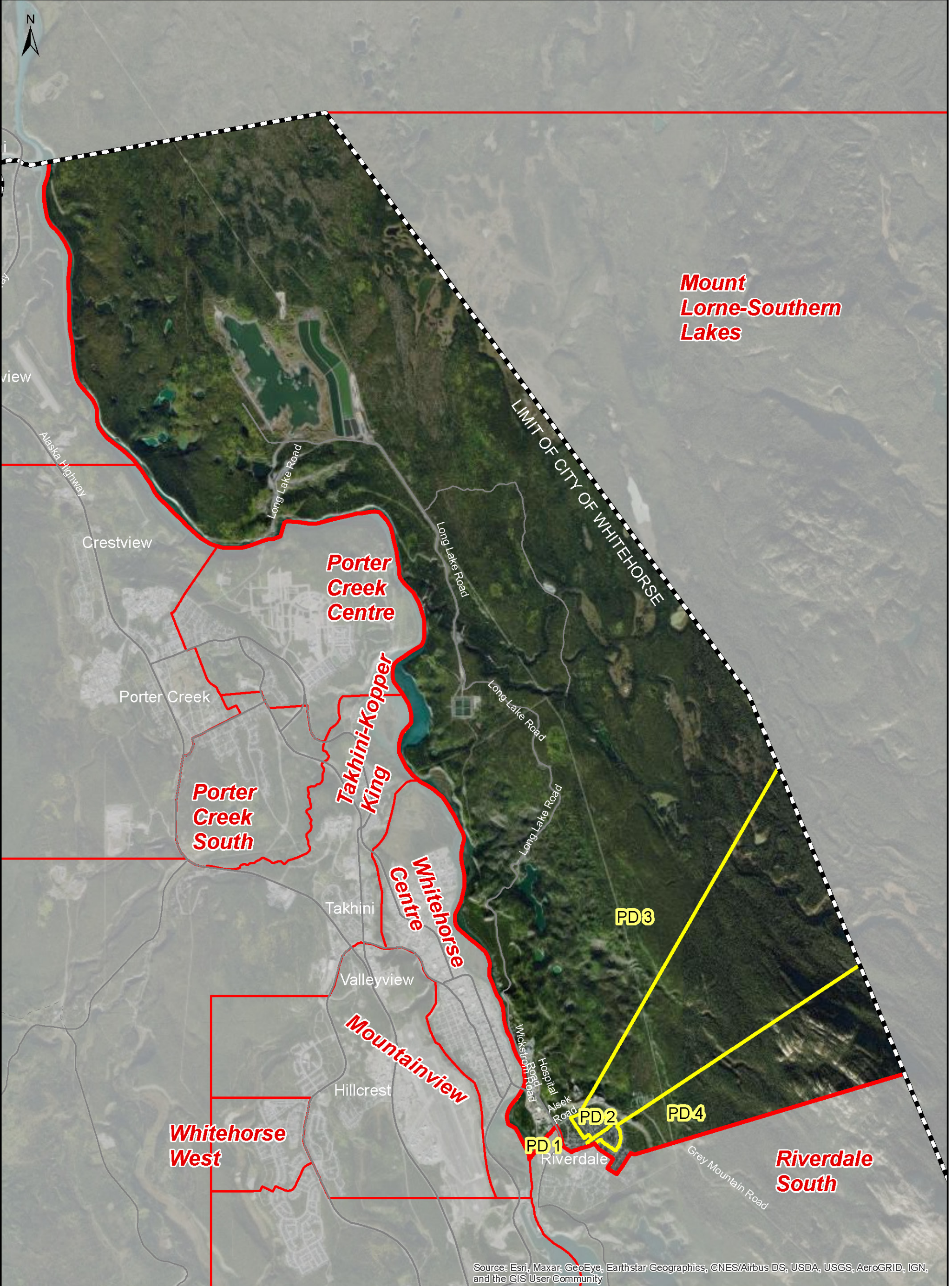
2703 2nd Ave
PO Box 2710 (A-9)
Whitehorse, Yukon Y1A 2C6

electionsyukon.ca
info@electionsyukon.ca
1 (866) 668-8683 (toll free)

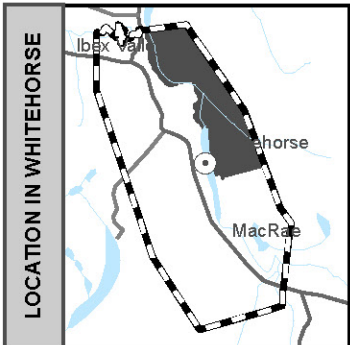
Published by the Chief Electoral
Officer of Yukon

Revised: Feb 2021





Source: Esri, Maxar, GeoEye, Earthstar Geographics, CNES/Airbus DS, USDA, USGS, AeroGRID, IGN, and the GIS User Community



POLLING DIVISIONS - 4/4

- PD 1
- PD 2
- PD 3
- PD 4

Electoral District

Riverdale North

ED13

Map 1 of 2

Circonscription électorale



2703 2nd Ave
PO Box 2710 (A-9)
Whitehorse, Yukon Y1A 2C6

electionsyukon.ca
info@electionsyukon.ca
1 (866) 668-8683 (toll free)

Published by the Chief Electoral
Officer of Yukon

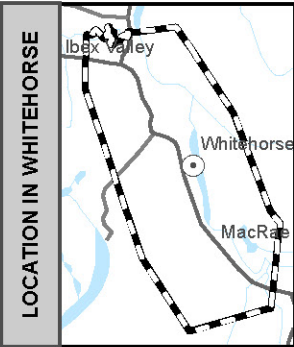
Revised: Feb 2021

Electoral District

Riverdale
North
ED13

Map 2 of 2

Circonscription électorale



POLLING DIVISIONS - 4/4

- PD 1
- PD 2
- PD 3
- PD 4



2703 2nd Ave
PO Box 2710 (A-9)
Whitehorse, Yukon Y1A 2C6

electionsyukon.ca
info@electionsyukon.ca
1 (866) 668-8683 (toll free)

Published by the Chief Electoral
Officer of Yukon

Revised: Feb 2021

