

POLLING DIVISIONS - 5/5

- PD 1
- PD 2
- PD 3
- PD 4
- PD 5

Electoral District

Kluane

ED04

Map 1 of 2

Circonscription électorale



2703 2nd Ave  
PO Box 2710 (A-9)  
Whitehorse, Yukon Y1A 2C6

electionsyukon.ca  
info@electionsyukon.ca  
1 (866) 668-8683 (toll free)

Published by the Chief Electoral  
Officer of Yukon

Revised: Feb 2021

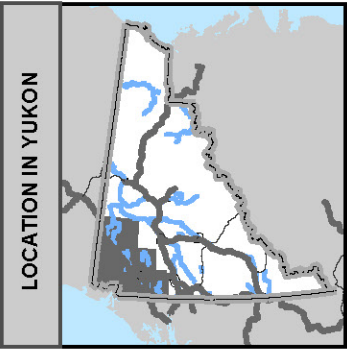
Electoral District

Kluane

ED04

Map 2 of 2

Circonscription électorale



POLLING DIVISIONS - 3/6

- PD 3
- PD 4
- PD 5

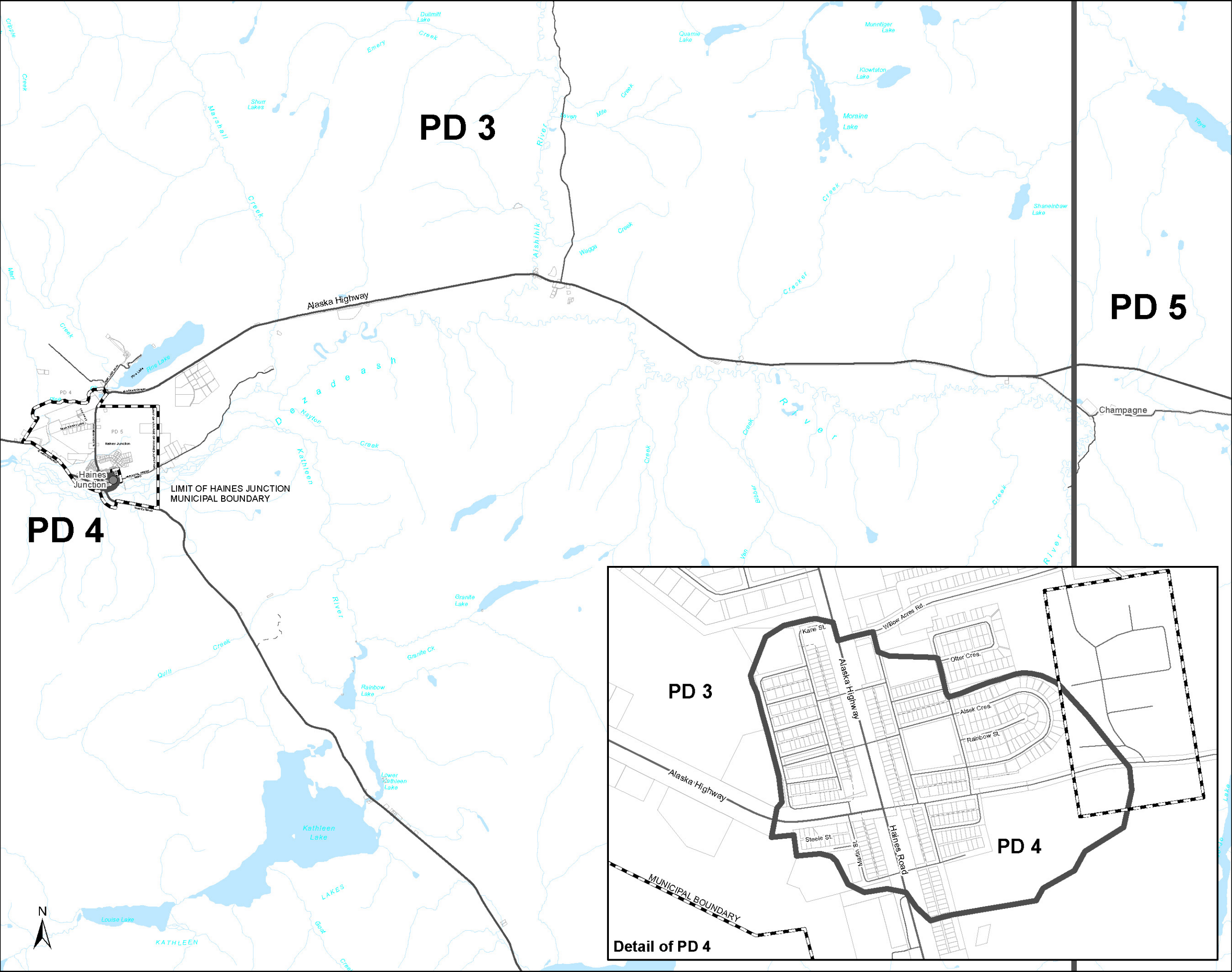


2703 2nd Ave  
PO Box 2710 (A-9)  
Whitehorse, Yukon Y1A 2C6

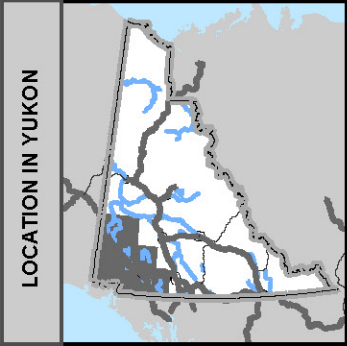
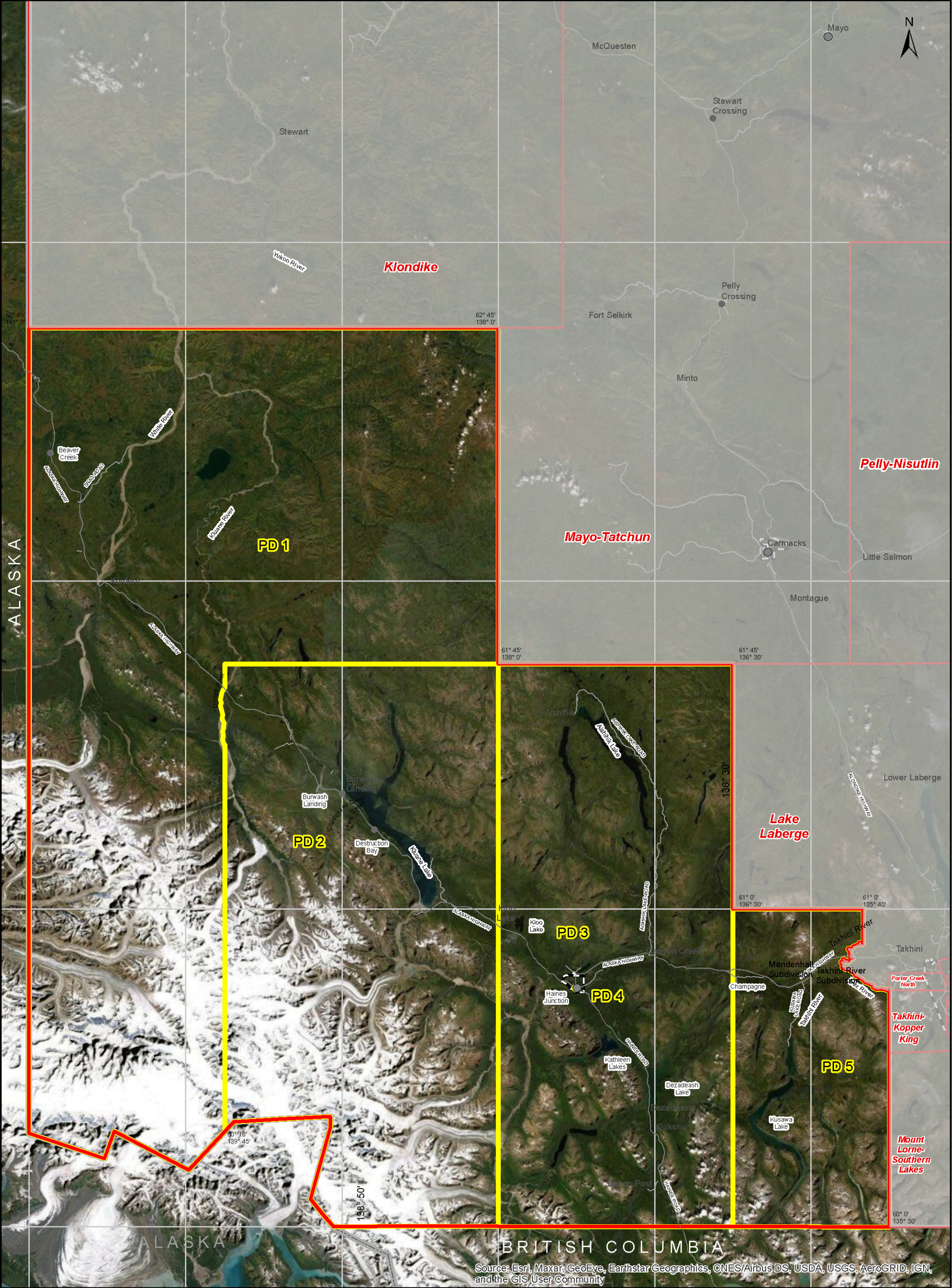
electionsyukon.ca  
info@electionsyukon.ca  
1 (866) 668-8683 (toll free)

Published by the Chief Electoral  
Officer of Yukon

Revised: Feb 2021







Electoral District

POLLING DIVISIONS - 5/5

- PD 1
- PD 2
- PD 3
- PD 4
- PD 5

Kluane

ED04

Map 1 of 2

Circonscription électorale



2703 2nd Ave  
PO Box 2710 (A-9)  
Whitehorse, Yukon Y1A 2C6

[electionsyukon.ca](http://electionsyukon.ca)  
[info@electionsyukon.ca](mailto:info@electionsyukon.ca)  
1 (866) 668-8683 (toll free)

Published by the Chief Electoral  
Officer of Yukon

Revised: Feb 2021



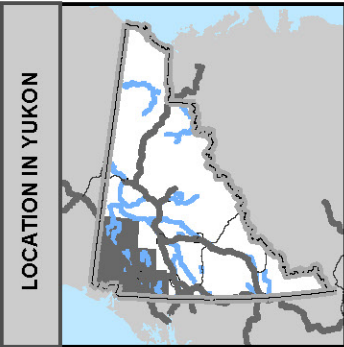
Electoral District

Kluane

ED04

Map 2 of 2

Circonscription électorale



POLLING DIVISIONS - 3/6

- PD 3
- PD 4
- PD 5



2703 2nd Ave  
PO Box 2710 (A-9)  
Whitehorse, Yukon Y1A 2C6

electionsyukon.ca  
info@electionsyukon.ca  
1 (866) 668-8683 (toll free)

Published by the Chief Electoral  
Officer of Yukon

Revised: Feb 2021

