

- POLLING DIVISIONS - 4/4**
- PD 1
  - PD 2
  - PD 3
  - PD 4

**Electoral District**

**Klondike**

**ED03**

**Map 1 of 2**

Circonscription électorale



2703 2nd Ave  
PO Box 2710 (A-9)  
Whitehorse, Yukon Y1A 2C6

electionsyukon.ca  
info@electionsyukon.ca  
1 (866) 668-8683 (toll free)

Published by the Chief Electoral  
Officer of Yukon

Revised: Feb 2021



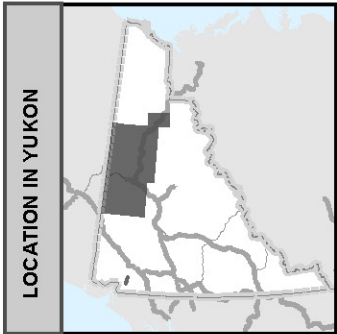
Electoral District

Klondike

ED03

Map 2 of 2

Circonscription électorale



POLLING DIVISIONS - 4/4

- PD 1
- PD 2
- PD 3
- PD 4



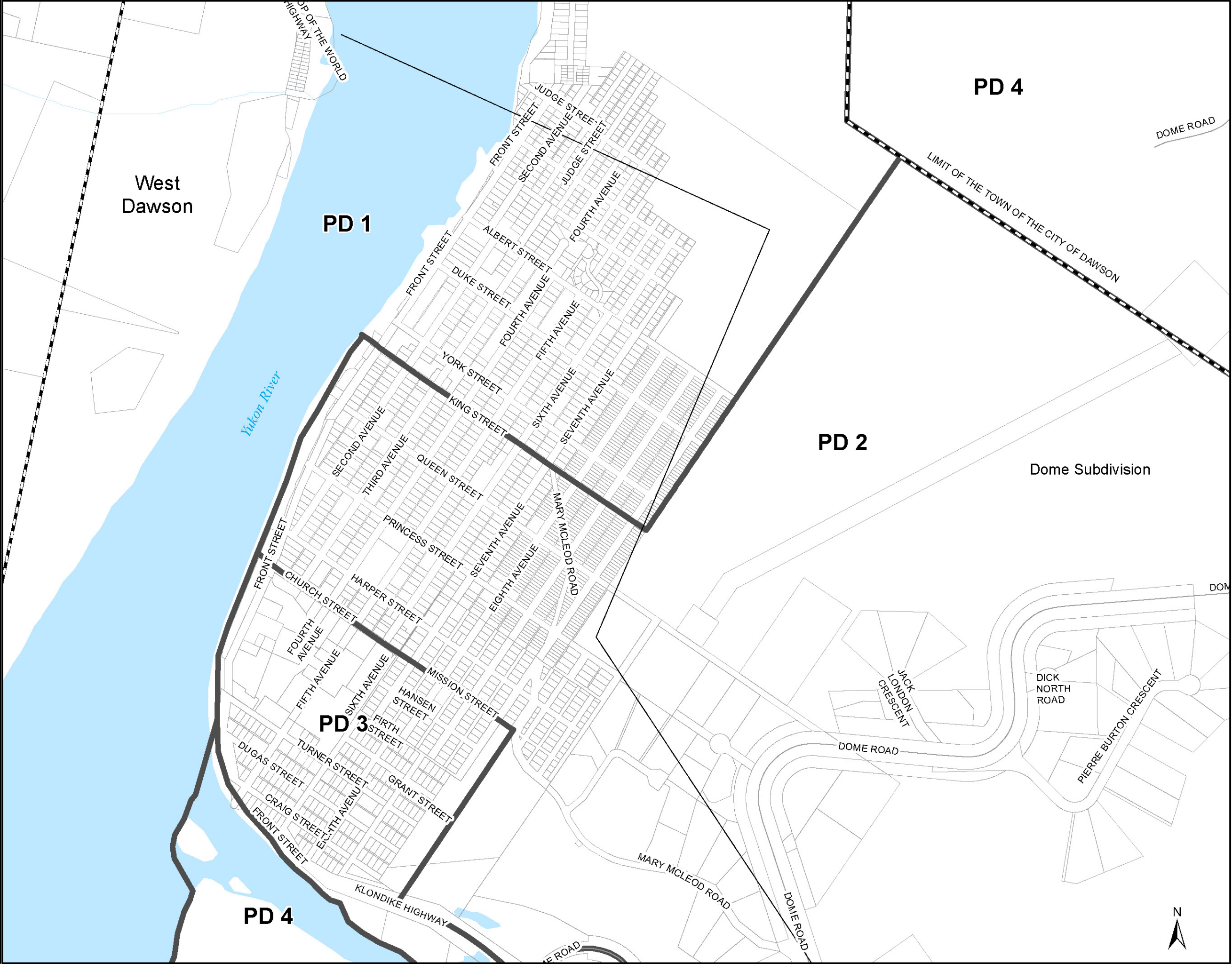
Sunnydale

2703 2nd Ave  
PO Box 2710 (A-9)  
Whitehorse, Yukon Y1A 2C6

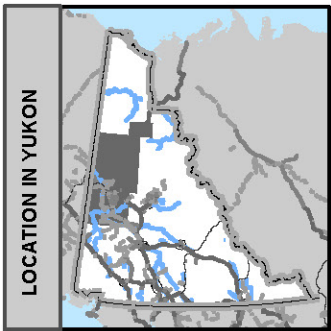
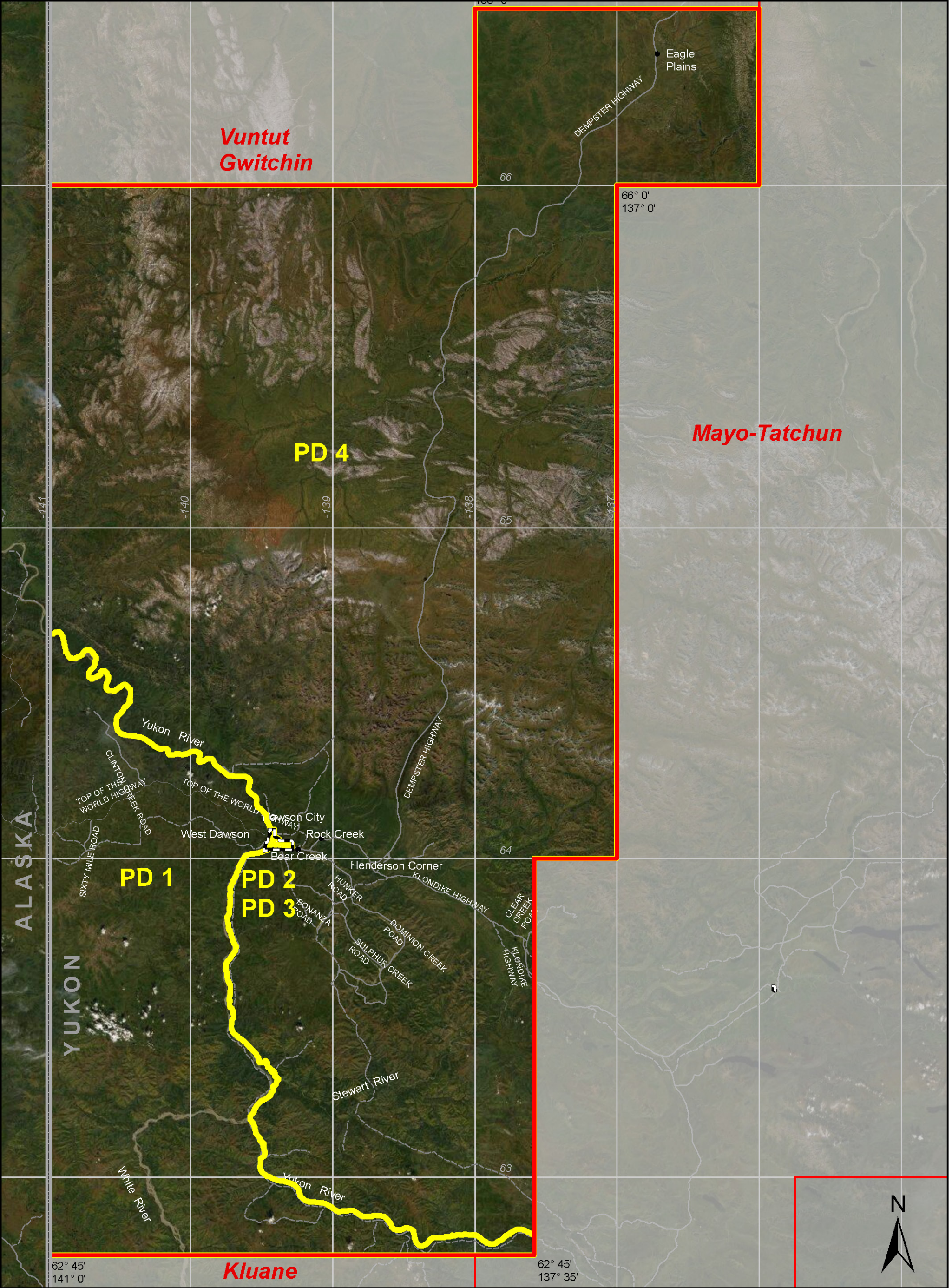
electionsyukon.ca  
info@electionsyukon.ca  
1 (866) 668-8683 (toll free)

Published by the Chief Electoral  
Officer of Yukon

Revised: Feb 2021







Electoral District

POLLING DIVISIONS - 4/4

- PD 1
- PD 2
- PD 3
- PD 4

Klondike

ED03

Map 1 of 2

Circonscription électorale



2703 2nd Ave  
PO Box 2710 (A-9)  
Whitehorse, Yukon Y1A 2C6

electionsyukon.ca  
info@electionsyukon.ca  
1 (866) 668-8683 (toll free)

Published by the Chief Electoral  
Officer of Yukon

Revised: Feb 2021



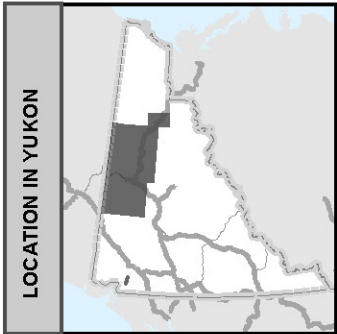
Electoral District

Klondike

ED03

Map 2 of 2

Circonscription électorale



POLLING DIVISIONS - 4/4

- PD 1
- PD 2
- PD 3
- PD 4



Sunnydale

2703 2nd Ave  
PO Box 2710 (A-9)  
Whitehorse, Yukon Y1A 2C6

electionsyukon.ca  
info@electionsyukon.ca  
1 (866) 668-8683 (toll free)

Published by the Chief Electoral  
Officer of Yukon

Revised: Feb 2021

